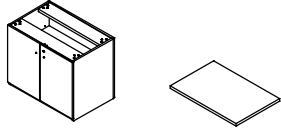


ASSEMBLING INSTRUCTION

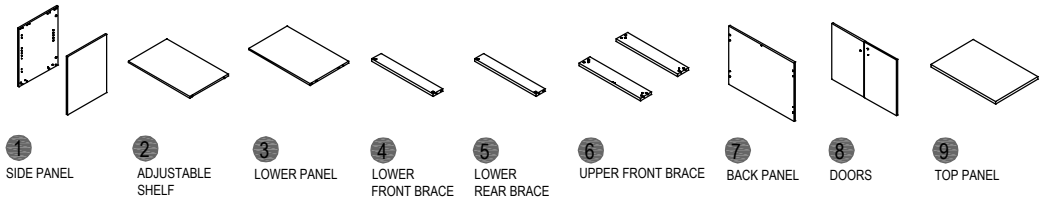
COMPONENTS

MARTIN[®] SERIES

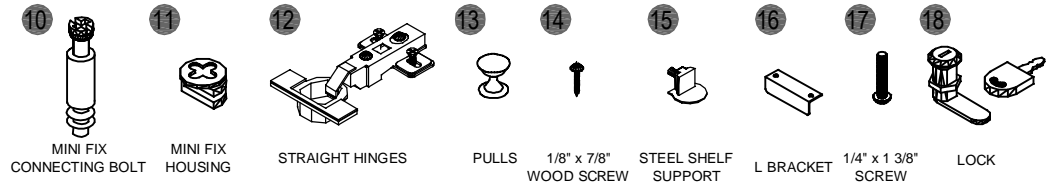


TWO DOOR CABINET

FORMCASE[®]
FORMING A BETTER WORKPLACE
www.formcase.com

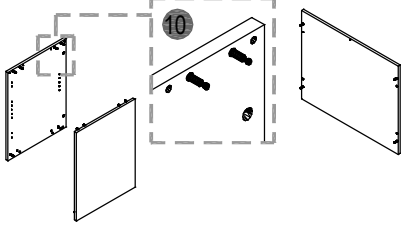


HARDWARE

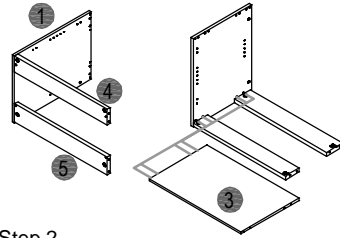


INSTALLING BODY

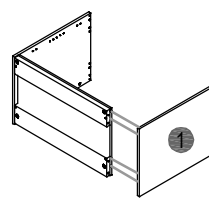
TOOL REQUIRED :
- PHILLIPS HEAD SCREW DRIVER AND FLAT HEAD SCREW DRIVER



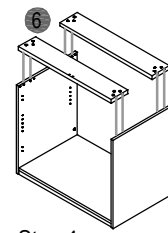
Step 1
Attach the mini fix connecting bolt into the nylon sockets provided in each panel.



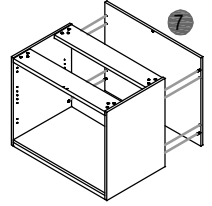
Step 2
a. Attach the front / rear lower braces to the side panel.
b. Attach lower brace to the side panel.
c. Tighten all the mini fix housings.



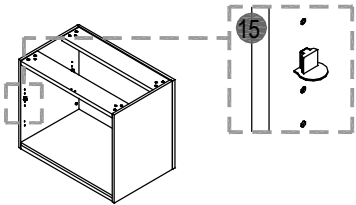
Step 3
Attach another side panel to the pre-assembled components and tighten all the mini fix housings.



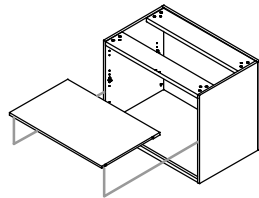
Step 4
Attach the front / rear upper braces to the side panels.



Step 5
Attach the back panel to the pre-assembled components and tighten all the mini fix housings.



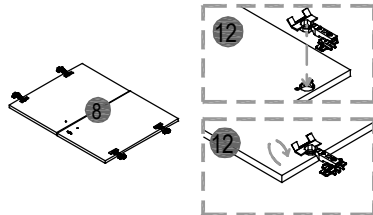
Step 6
a. Put the steel shelf support pin into the predrilled holes at the side panels.



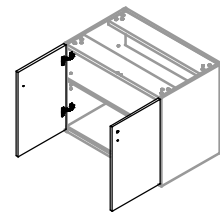
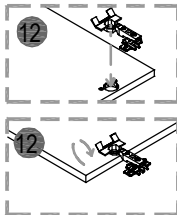
b. Position the adjustable shelf on the steel shelf support pin.

note:
For installing body 1636, step 2 and step 5 are not required because 1636 not using lower and upper brace.

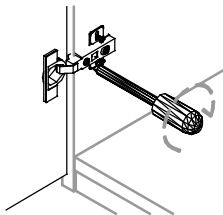
INSTALLING DOORS



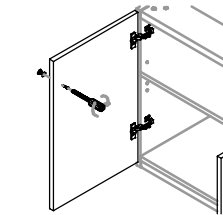
Step 1
a. Attach the hinges to the doors.
(see detail 1)



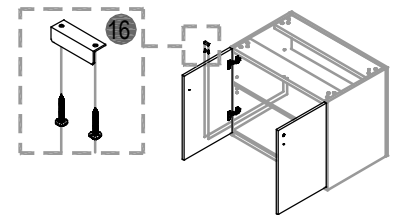
Step 2
Attach the doors to the cabinet's body.



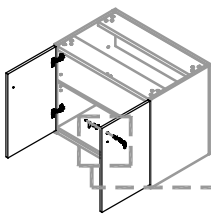
Step 3
Align the doors by adjust the hinges



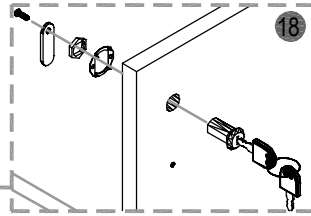
Step 4
Attach the pulls to the doors by using 1/8" x 7/8" screws.



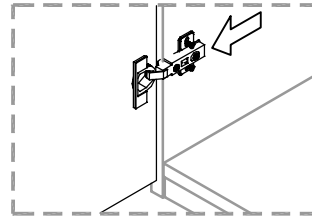
Step 5
Attach the L Plate by using 1/8" x 7/8" screws.



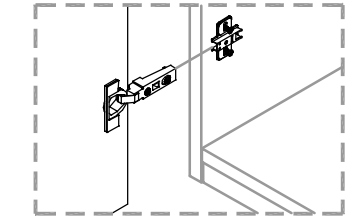
Step 5
Attach the Lock
(see detail 2)



Clip on features
All of the Formcase products use clip on hinges. Once the doors is attached to the cabinet / hutch, the doors can be easily removed or reinstalled without using a tool.

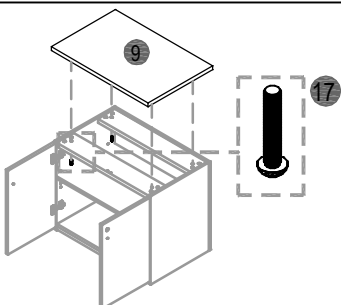


How to remove a clip on hinge?
Simply push the clip, located near the side panel and pull out the doors.



How to reinstall a clip on hinge?
Position the clip to the part of the hinge at the side panel, and then push the door to reconnect the hinge.

INSTALLING TOP PANEL



Step 1
Attach the desktop to cabinet body by using 1/4" x 1 3/8" screws.